

Closing the Gap: Composix L/P Mesh-Mediated Continuous Fascial Traction

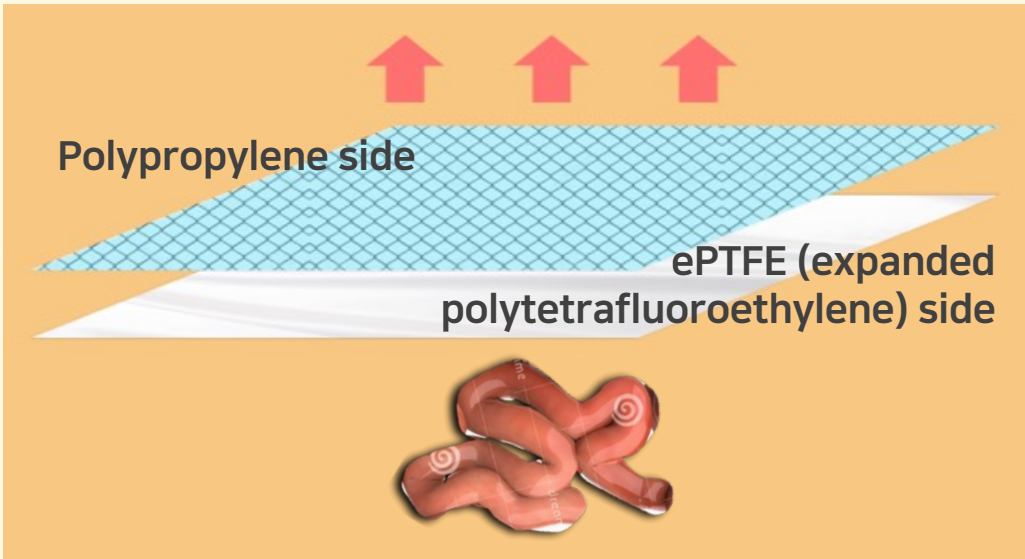
Yoonjung Heo, Dong Hun Kim

Department of Trauma Surgery, Trauma Center, Dankook University Hospital, Cheonan, Korea

INTRODUCTION

Negative-pressure wound therapy (NPWT) with continuous fascial traction (CFT) in open abdomen
→ Fascial retraction, definitive fascial closure (DFC)
→ Recommended as a primary technique¹
¹WSES guidelines. World J Emerg Surg 2018;13:7

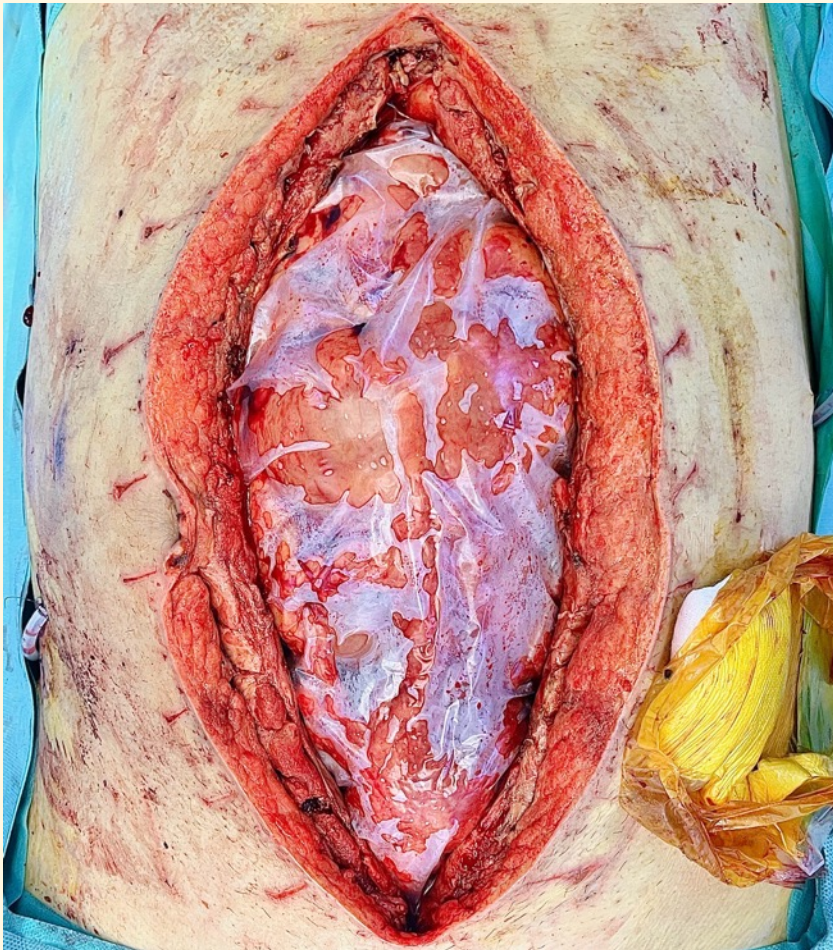
★ Bard™ Composix™ L/P Mesh



MATERIALS AND METHODS



Open abdomen after a damage control surgery (DCS)



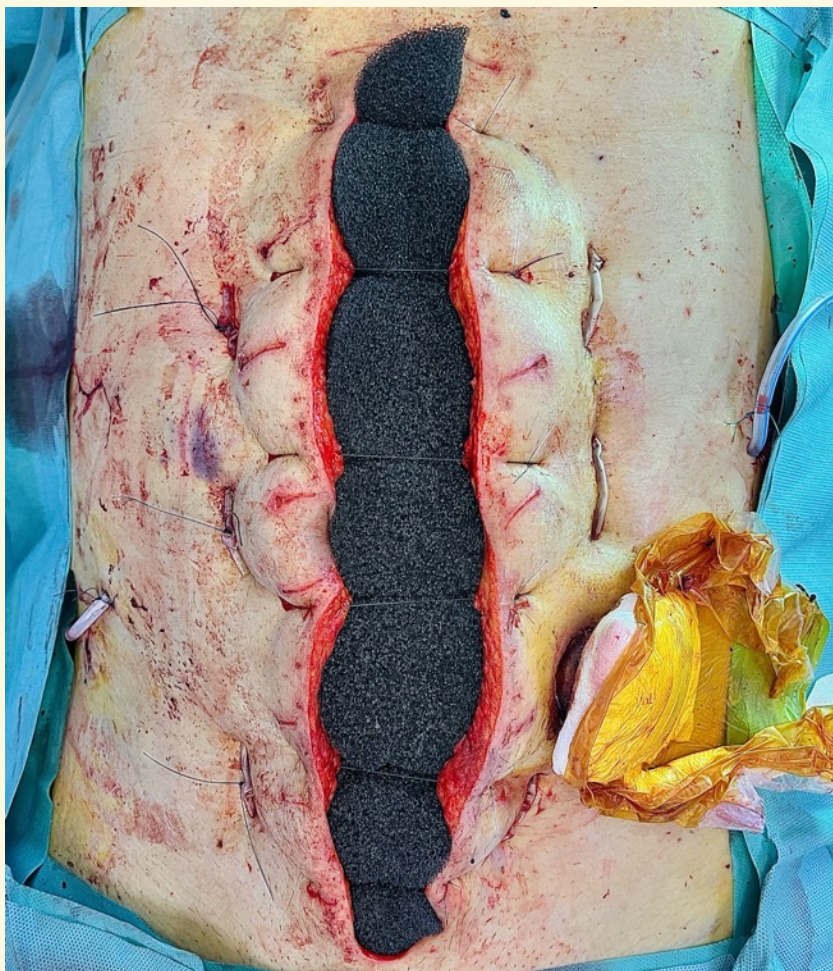
Visceral organs coverage with a sterile plastic bag



Placement and fixation of the Composix L/P mesh



Approximation of skin & soft tissue via retention suture

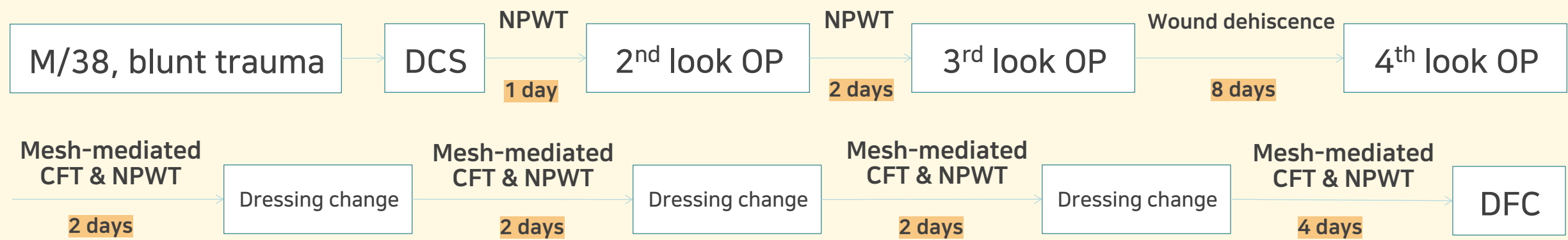


Insertion of vacuum sponge between the mesh & strings



Completed NPWT setup

RESULTS



CONCLUSION

NPWT with CFT via Composix L/P mesh can facilitate safe and durable abdominal closure after OA. Further studies are needed to determine its efficacy and long-term effects.